

- In addition to routine checks for each use, PPE should regularly undergo a detailed inspection by a competent person. Petzl recommends an inspection every 12 months and after any exceptional event in the life of the product.
 - PPE inspection should be conducted with the manufacturer's Instructions for Use.
- Download the instructions at [PETZL.COM](https://www.petzl.com).

GRILLON LANYARD



1. Known product history

Any PPE showing unexpected degradation should be quarantined, pending a detailed inspection.

The user should:

- Provide precise information on the usage conditions.
- Report any exceptional event regarding his PPE.

(Examples: fall or fall arrest, use or storage at extreme temperatures, modification outside manufacturer's facilities...).

2. Preliminary observations

Verify the presence and legibility of the serial number and the CE mark.

Attention, the serial number code on our products is evolving. Two types of code will coexist. See below for details on each serial number code.

Code A:

00 000 AA 0000

Year of manufacture	00
Day of manufacture	000
Name of Inspector	AA
Incrementation	0000

Code B:

00 A 0000000 000

Year of manufacture	00
Month of manufacture	A
Batch number	0000000
Incrementation	000

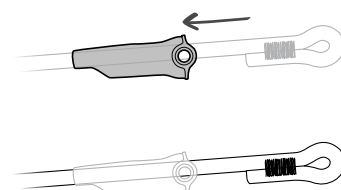
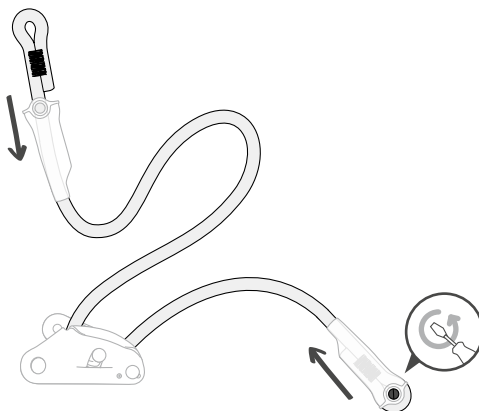
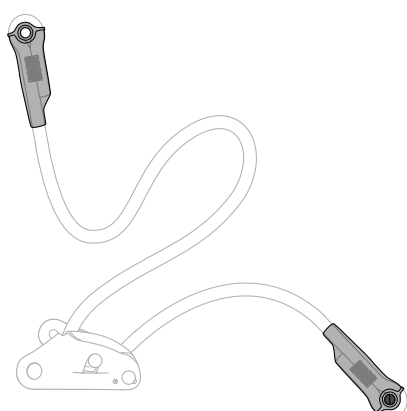
Verify that the product lifetime has not been exceeded.

Compare with a new product to verify there are no modifications or missing parts.

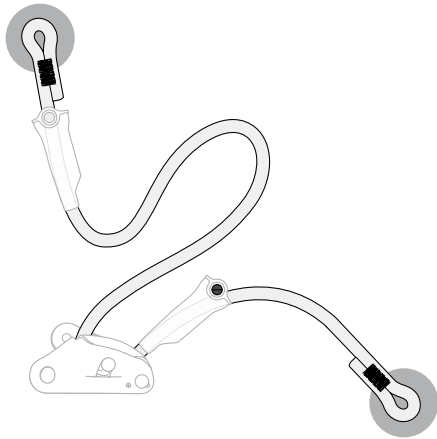
Note: in the case of the GRILLON lanyard, there are two serial numbers (one on the rope and one on the metal part).

3. Checking the lanyard ends

- Remove the lanyard connector (if possible).
- Check the condition of the protective sheaths (cracks, deformation...). If possible, move the sleeve to check the condition of the safety stitching. Check the condition of the safety stitching on both sides. Look for any threads that are loose, worn, or cut.

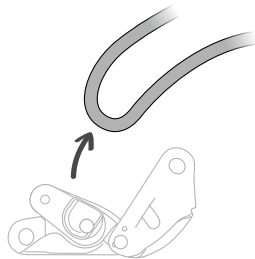
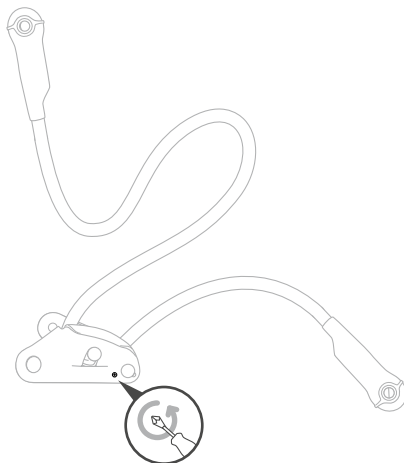


- Check the condition of the rope at the two attachment holes.

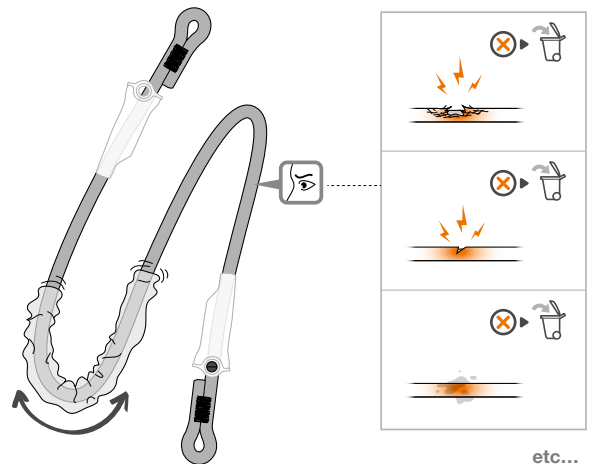


4. Inspecting the rope

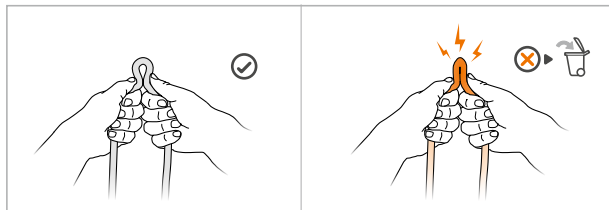
- Remove the device's locking screw and take the rope out of the GRILLON.



- Look for wear and damage on the sheath due to use (cuts, fuzziness, signs of chemicals...). Move the protective sleeve to see the rope's condition along its entire length.



- Do a tactile inspection of the core along the full length of the rope (hard spots, swelling, soft or crushed areas...).



- If necessary, retire the rope and replace it with a Petzl spare rope for GRILLON lanyard. Follow the installation instructions in the Instructions for Use provided with the replacement rope.

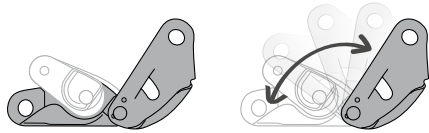


5. Inspecting the connectors

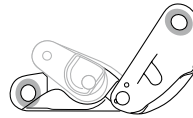
- For connector inspection, see the inspection form for your connector model at Petzl.com.

6. Inspecting the frame

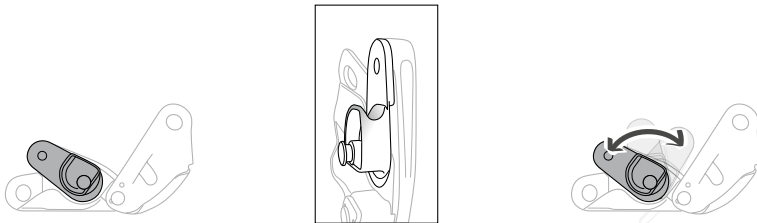
- Check the general condition of the frame and side plates (marks, deformation, fouling, cracks, corrosion...). Verify that the side plates open and close properly.



- Check the condition of the attachment hole (marks, deformation, cracks, corrosion...).

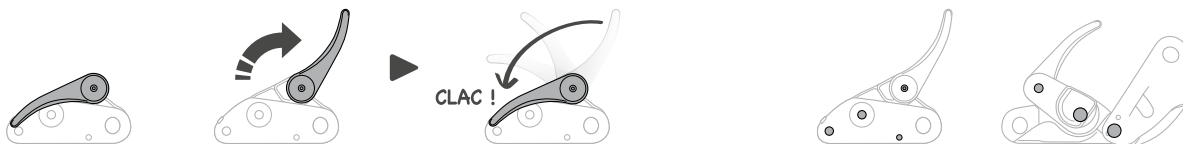


- Check the condition of the cam groove and that the cam rotates freely (no spring). Make sure there are no foreign objects in the mechanism (mud, sand).

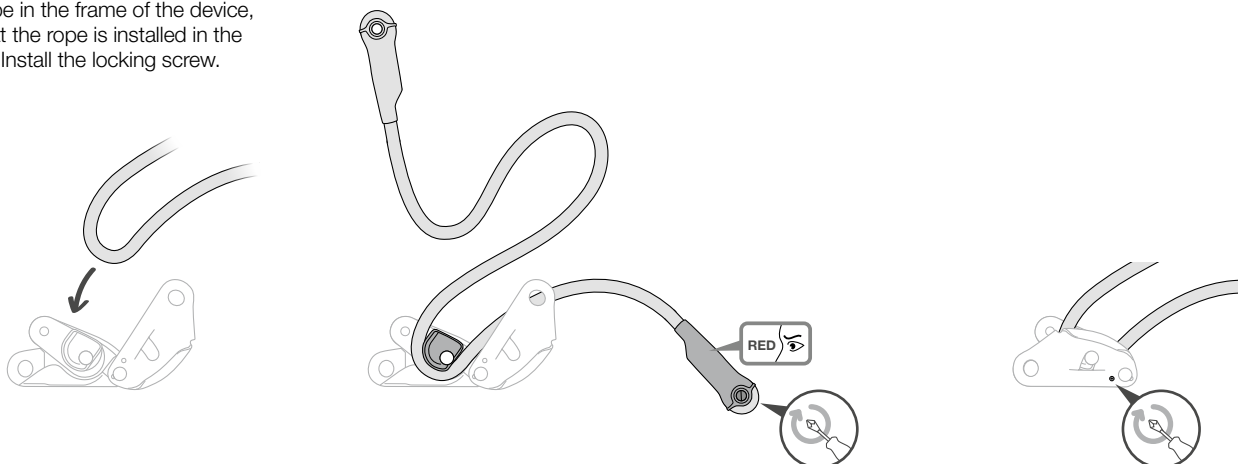


- Check the condition of the handle (marks, deformation, cracks...). Check that the handle return spring is working properly.

- Check the condition of the rivets and of the locking screw.

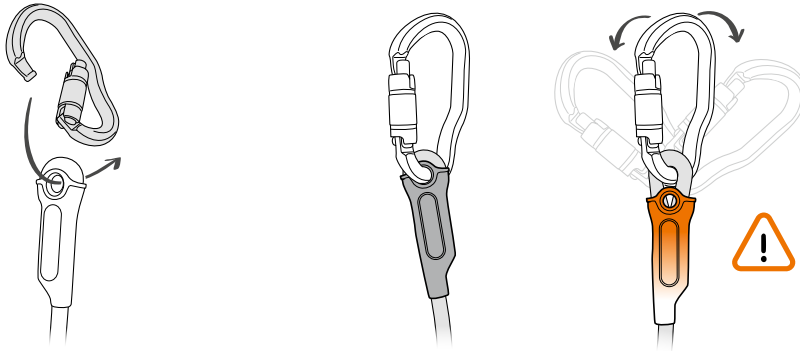


- Insert the rope in the frame of the device, taking care that the rope is installed in the right direction. Install the locking screw.



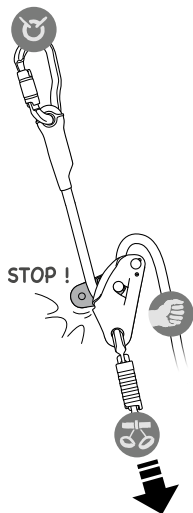
7. Remounting the connector

- Replace the connector (EN 362). Verify that the plastic protector correctly positions the connector.



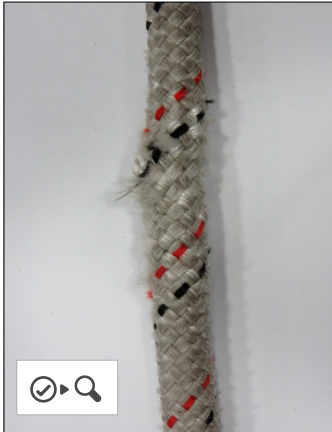
8. Function check

- Do a function check with the device on the harness. Pull on the anchor side of the rope; the rope must lock in the device.



9. Appendix: examples of GRILLON lanyards that are worn, or that should be retired

- Cut in the rope



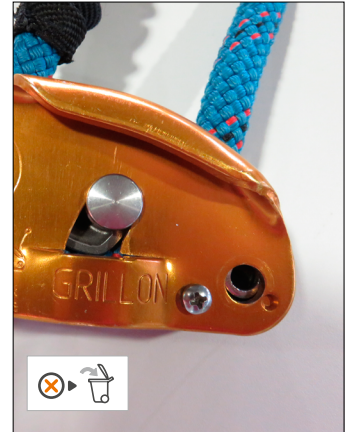
- Marks



- Jammed cam



- Rivet missing



- Trace of chemicals



- Locking screw missing

