

- In addition to routine checks for each use, PPE should regularly undergo a detailed inspection by a competent person. Petzl recommends an inspection every 12 months and after any exceptional event in the life of the product.
 - PPE inspection should be conducted with the manufacturer's Instructions for Use.
- Download the instructions at [PETZL.COM](https://www.petzl.com).

NON-ADJUSTABLE ROPE LANYARD



1. Known product history

Any PPE showing unexpected degradation should be quarantined, pending a detailed inspection.

The user should:

- Provide precise information on the usage conditions.
- Report any exceptional event regarding his PPE.

(Examples: fall or fall arrest, use or storage at extreme temperatures, modification outside manufacturer's facilities...).

2. Preliminary observations

Verify the presence and legibility of the serial number and the CE mark.

Attention, the serial number code on our products is evolving. Two types of code will coexist. See below for details on each serial number code.

Code A:

00 000 AA 0000

Year of manufacture
Day of manufacture
Name of Inspector
Incrementation

Code B:

00 A 0000000 000

Year of manufacture
Month of manufacture
Batch number
Incrementation

Verify that the product lifetime has not been exceeded.

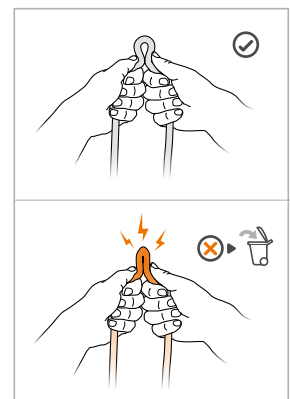
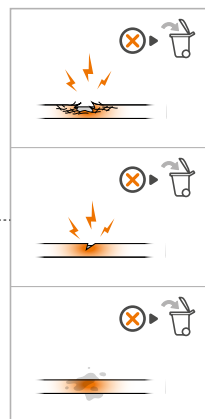
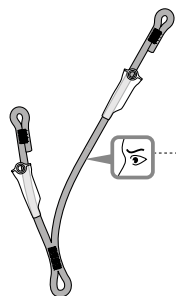
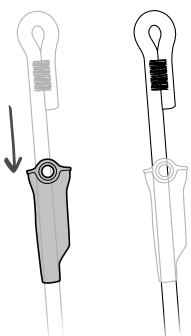
Compare with a new product to verify there are no modifications or missing parts.

3. Checking the condition of the rope

- Remove the connectors from the lanyard ends. Move the protective sleeve in order to check the covered parts.

- Look for wear and damage on the sheath due to use (cuts, fuzziness, chemical residues...).

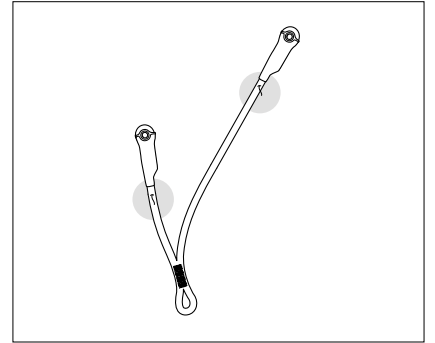
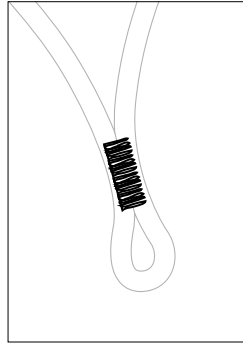
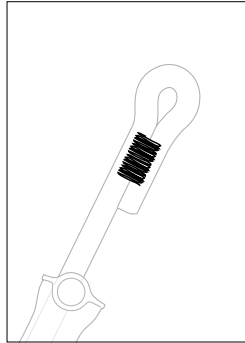
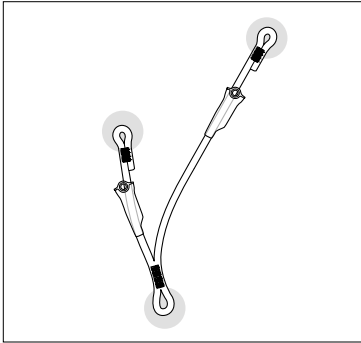
- Do a tactile inspection of the core along the full length of the rope (hard spots, swelling, soft or crushed areas...).



- Check the condition of the rope at the harness attachment holes and at the ends of the lanyard.

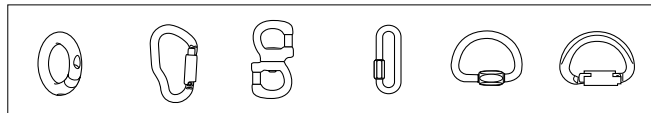
- Check the condition of the safety stitching on both sides. Look for any threads that are loose, worn, or cut.

Verify that the fall indicator is present (only on the PROGRESS).



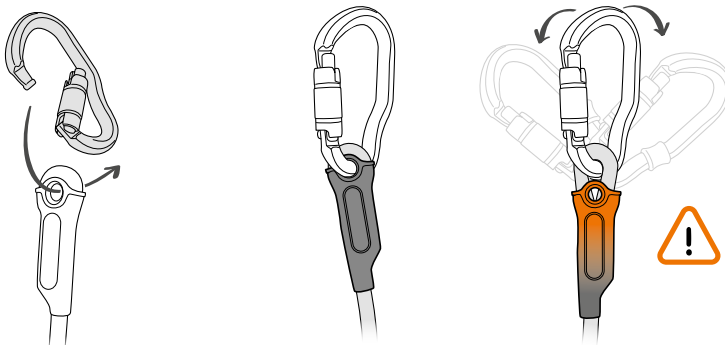
4. Checking the condition of the connectors

- For connector inspection, see the inspection form for your connector model at Petzl.com.



5. Reinstalling the connectors

- Reinstall the connectors. Verify that the plastic protector correctly positions the connector.



6. Appendix: Examples of common issues to look for during inspection

• Trace of paint



• Trace of paint



• Cut



• Damaged plastic sleeve



• Fall indicator



• Fall indicator



• Trace of chemicals



• Trace of chemicals

